

RAIDON

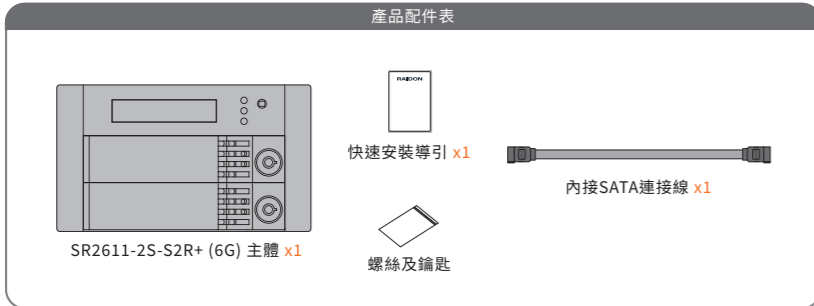
SR2611-2S-S2R+ (6G) 快速安裝導引

產品示意圖與配件表



- | | | | |
|--------------|--------------|-------------|--------------|
| 1 LCD顯示幕 | 4 Sec HDD指示燈 | 1 散熱風扇 | 4 SATA 埠 |
| 2 故障警示燈 | 5 靜音按鈕 | 2 RAID 模式設定 | 5 15 Pin電源接頭 |
| 3 Pri HDD指示燈 | 6 鎖頭 | 3 RS232 埠 | 6 大四P電源接頭 |

打開包裝外盒後，包裝內容應包含下列組件：



- 請先確認相關配件與產品本身是否有受損或是缺少配件，若有任何疑問，請與您的經銷商或業務人員聯絡。
- 請前往官網 (www.raidon.com.tw) 下載說明書、驅動程式以及其餘相關資源。

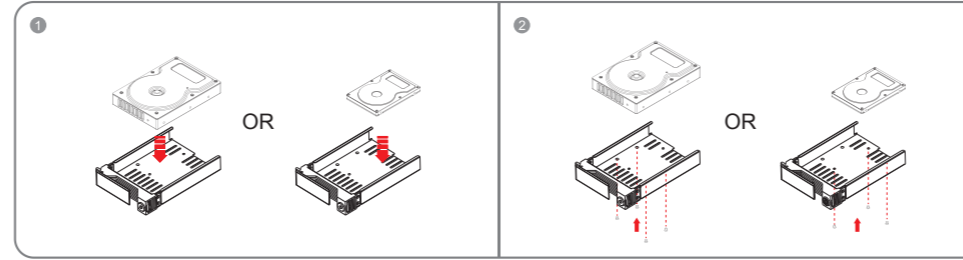


V1.5 (Mar. 2020)

1

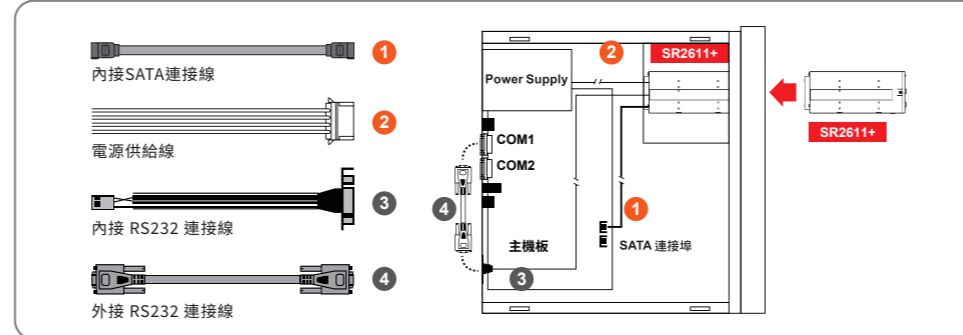
硬體安裝

- 取出硬碟抽取盒，將硬碟安裝在硬碟抽取盒上並使用附件包裡隨附的螺絲鎖固定硬碟。



- 將兩個硬碟都依上述步驟完成安裝之後，將硬碟抽取盒置回SR2611-2S-S2R+ (以下簡稱為SR2611+) 主體中，並扣上把手。
- 將主體安裝於電腦機殼上的 CD-ROM 位置，請使用配件零件包的螺絲固定，並連接 SATA 連接線與電源線。

NOTE RS232 連接埠和 RS232 連接線：提供工控產業或 IPC 產業透過 RS232 進行硬體狀態偵測，如有需要可向銳銳銷售/客服人員 supporting@raidon.com.tw 索取相關資料。



- 硬體安裝完成。一旦開啟電腦，您的作業系統會自動辨識所裝置好的硬碟。如果您的硬碟是必須被格式化的，請依照電腦的作業系統進行硬碟格式化步驟。當完成硬碟格式化後，硬碟便可以進行資料讀寫。

2

設定磁碟陣列

- 請使用背板上的 Jumper，選擇 RAID 0 或 RAID 1 模式。在 RAID 模式中有三個排針，將 Jumper 套在上面的兩個排針即為 RAID 1 模式，將 Jumper 套在下面的兩個排針即為 RAID 0 模式，原廠預設值為 RAID 1。



- RAID 1 模式 (default)
 - 放置 2 顆新硬碟在 SR2611+。
 - 兩顆硬碟進行同步寫入達到備份效果，其中一顆硬碟損壞仍可繼續運作。

使用 RAID 1 的硬碟容量算法：
[總容量]=[容量最小的硬碟]

例：
2 x 500GB 硬碟 = 500GB
1 x 500GB 硬碟 + 1 x 200GB 硬碟 = 200GB

- RAID 0 模式
 - 放置 2 顆新硬碟在 SR2611+。
 - 將 2 顆 2.5 吋或 3.5 吋硬碟容量加總，讀取效率會加快；當裝入的硬碟為 1 大 1 小時，SR2611+ 會將大容量的硬碟當成小容量的硬碟。

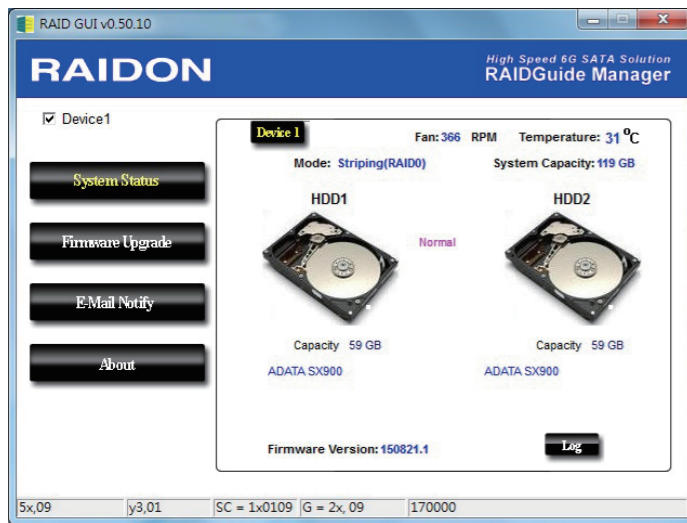
使用 RAID 0 的硬碟容量算法：
[總容量]=[硬碟數] x [容量最小的硬碟]

例：
2 x 500GB 硬碟 = 2 x 500GB = 1000GB
1 x 500GB 硬碟 + 1 x 200GB 硬碟 = 2 x 200GB = 400GB

在新增或變更 RAID 模式後需重新啟動產品，以確保完成更新為新的 RAID 模式。

3

啟用 RAIDGuide 軟體的畫面如下



RAIDGuide 可用來觀察 RAID 狀況，以及更新韌體，可於光碟中找到相關程式。

4

LCD顯示的各種訊息

- 開機與正常待機狀態
SR2611+ RAID-1 v150821.1 → Pe i HDD:OK Sec HDD:OK
- 溫度過高(≥50°C)
Pe i HDD:OK Sec HDD:OK T
- 風扇故障
Pe i HDD:OK F Sec HDD:OK
- RAID 1 模式，Pri 硬碟損毀而 Sec 硬碟仍然可正常存取。
RAID-1 degraded Pri : X Sec : O
- RAID 1 損毀，Pri 與 Sec 硬碟皆損毀。
RAID-1 failure Pri : X Sec : X
- RAID 1 損毀，Source 碟重複。
RAID-1 failure Double Source
- RAID 0 損毀，Pri 或 Sec 硬碟遺失。
RAID-0 failure Pri : M Sec : O RAID-0 failure Pri : O Sec : M
- RAID 1 損毀，Pri 硬碟遺失而 Sec 硬碟仍然正常。
RAID-1 failure Pri : M Sec : O
- 資料重建
Rebuilding Sec→Pri 32% Rebuilding Pri→Sec 32%
Sec to Pri Pri to Sec

NOTE 當「T」出現時，是代表系統過熱的警告，但是不至於影響正常資料傳輸，只要改善環境溫度，就可恢復正常。

5

產品使用注意事項

- 若想得到較佳的使用效能與選購硬碟的便利性，建議使用規格及廠牌相同的 3.5 吋硬碟。若 RAID 1 模式下，當其中有任何一顆硬碟損毀時，新更換的硬碟容量需大於或等於原硬碟容量。
- 請確保使用的硬碟是不含壞軌的，以避免當其中一顆硬碟發生故障時，可能導致系統當機或所有資料遺失。
- 建議於使用前決定 RAID 0 或 RAID 1 模式。使用後，若需重新設定，請先將資料備份至其他硬碟，否則將會造成硬碟內的資料損毀。
- 強烈建議除了使用 SR2611+ 系列的資料儲存功能外，請針對重要資料備份到另一個儲存裝置上或遠端備份，雙重備份您重要的資料。若您儲存在 SR2611+ 系列的資料損毀或遺失，RAIDON 將不負任何的責任。

感謝您使用 銳銳科技股份有限公司 的產品。本手冊裡的資訊在出版前雖然已經被詳細確認，但實際產品規格將以出貨時為準；任何的產品規格或相關資訊更新，請您直接上 www.RAIDON.com.tw 網站查詢，或是直接與您的業務聯絡窗口聯繫，本公司將不另行通知。

如果您對 銳銳科技 的產品有任何疑問，或是想獲得最新產品訊息、使用手冊或韌體，請您聯絡 supporting@raidon.com.tw，我們將儘速回覆您。

本說明相關產品內容歸 銳銳科技股份有限公司 版權所有

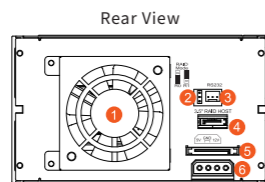
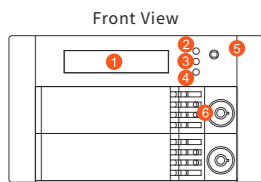
6

NOTE 隨意的更新韌體將有可能導致您的系統無法正常運作，若您的系統運作一切正常，建議您不必進行韌體更新。若您有韌體更新上的疑慮，請先聯絡銳銳科技的技術服務人員，或來信 supporting@raidon.com.tw。

RAIDON

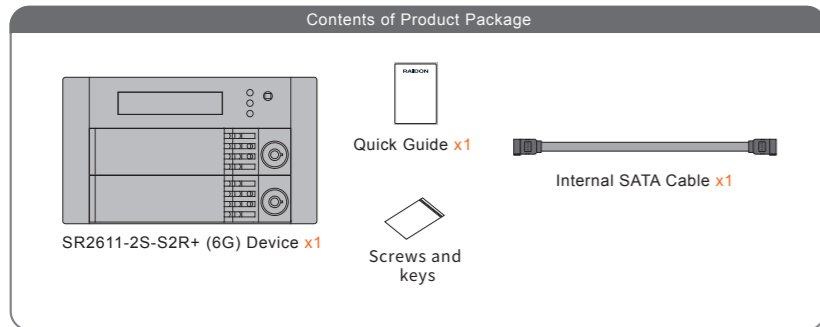
SR2611-2S-S2R+ (6G) Quick Installation Guide

Product Diagrams and Contents of Product Package



- | | | | |
|------------------------|------------------|--------------|-----------------------------|
| 1 LCD Display | 4 LED of Sec HDD | 1 Fan | 4 SATA Port |
| 2 LED of Failure Alarm | 5 Mute Button | 2 RAID Mode | 5 15 PIN Power Connector |
| 3 LED of Pri HDD | 6 Key Lock | 3 RS232 Port | 6 4 Pin Big Power Connector |

After you open the outer package, make sure that the following items are contained in the package:



- Please check the included parts and the product itself for any damage or missing parts. If you have any questions, please contact the retailer or sales representative.
- Please visit the official website (www.raidon.com.tw) to download user manuals, drivers and other related resources.

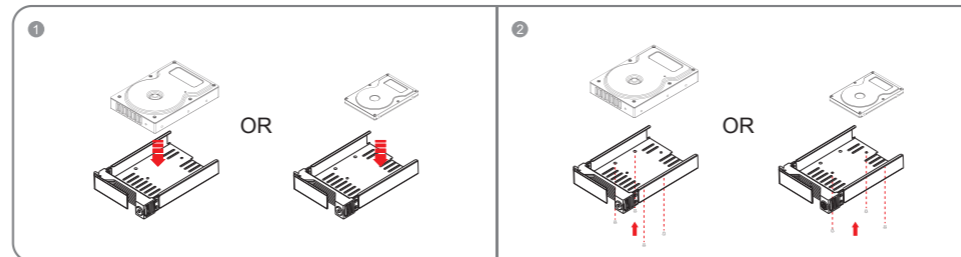


V1.5 (Mar. 2020)

1

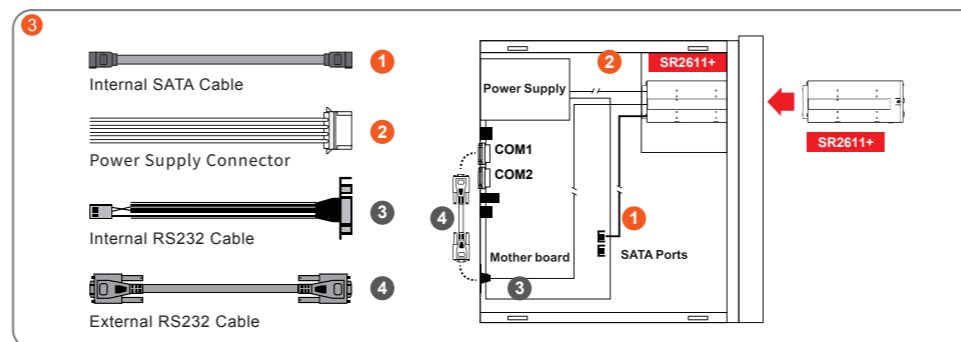
Hardware Installation

- Install your hard disks into the removable trays and secure them with the screws from accessory kit. This will protect your hard disk from any unnecessary movement.



- Once the hard disks have been installed, insert the removable trays into device and close the handles.
- Install device into one of the CD-ROM bays with screws from the accessory kit. Then properly connect SATA cable and power cable from your system to the device.

! RS232 Port: For industrial control system or IPC to monitor the hardware status. More information, please contact your sales window or supporting@raidon.com.tw

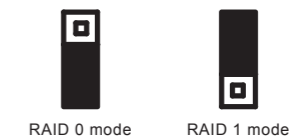


- Power on your system after hardware installation is completed, and your operating system will automatically detect the hard drives from booting. Then follow the steps from your operating system to partition and format the drives when necessary, device will be ready to use once the format is completed.

2

RAID Mode Setting

- Please select the RAID mode with the jumper located at the back panel. The original default is RAID 1, still there are three pins at the back panel for RAID mode selection: RAID 0 mode by setting the jumper on the bottom of the two pins. RAID 1 mode by setting the jumper on the top of the two pins.



- RAID 1 Mode (default)

- 1) Insert two brand new hard drives into SR2611-2S-S2R+ (Hereinafter referred to as SR2611+).
- 2) As RAID 1 is composed of two hard drives, it can be referred to as disk mirroring, each data will simultaneously be written in two hard drives and the data in two hard drives are exactly the same. Whenever one of the hard drives is failed, the system is still able to work normally. Once the failed hard drive is replaced by a new one, SR2611+ will start auto-rebuilding.

The computing method of RAID 1 hard disk capacity:
[total capacity] = [minimum capacity of hard drive]

Ex:
2 × 500GB HDD=500GB
1 × 500GB HDD+1× 200GB HDD=200GB

- RAID 0 Mode

- 1) Insert two brand new hard drives into SR2611+.
- 2) The RAID 0 combines two hard drives to work as a large hard drive which provides the efficient read/write performance.

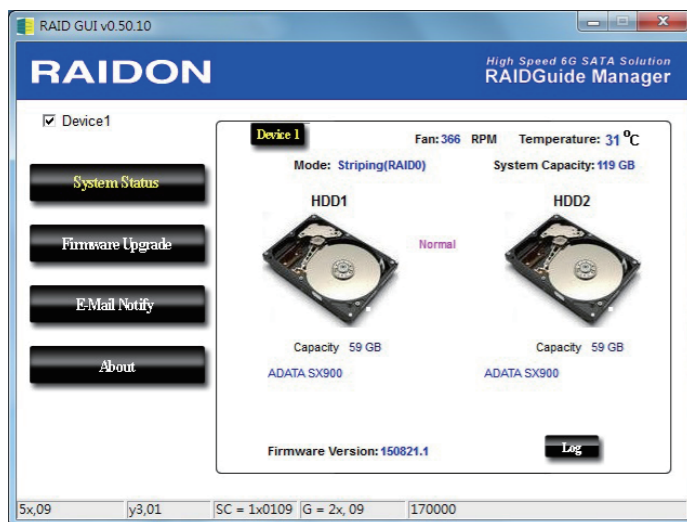
The computing method of RAID 0 hard disk capacity:
[total capacity] = [hard drive number] × [minimum capacity of hard drive]

Ex:
2 × 500GB HDD=2 × 500GB=1000GB
1 × 500GB HDD+1× 200GB HDD=2×200GB=400 GB

The product needs to be restarted after adding or changing the RAID mode, and the update is guaranteed to be the new RAID mode.

3

GUI Monitoring Software & Firmware Updating



You can use the GUI software to monitor RAID status and update firmware. Please find the related application program from the disc that provided in the package.

NOTE Updating firmware may cause your system unable to operate normally. If your system runs normally, we suggest that you do not update firmware. Should you have any doubts on firmware updating, please contact the technical service staff of RAIDON Technology Inc. or email us at: supporting@raidon.com.tw.

4

All Messages Displayed on the LCD

- Bootling and Normal status
SR2611+ RAID-1 v150821.1 → Pe i HDD:OK Sec HDD:OK
- Over Temperature (≥50°C)
Pe i HDD:OK Sec HDD:OK T
- Fan Failure
Pe i HDD:OK Sec HDD:OK F
- RAID 1 Mode. Primary hard drive is failure, but secondary hard drive is normal.
RAID-1 degraded Pri : X Sec : O
- RAID 1 Failure. Primary and secondary hard drives are failure.
RAID-1 failure Pri : X Sec : X
- RAID 1 Failure (Double Source)
RAID-1 failure Double Source
- RAID 0 Failure. Primary or secondary hard drive is missing.
RAID-0 failure Pri : M Sec : O RAID-0 failure Pri : O Sec : M
- RAID 1 Failure. Primary hard drive is missing, but secondary hard drive is normal.
RAID-1 failure Pri : M Sec : O
- Rebuilding
Rebuilding Sec→Pri 32% Rebuilding Sec→Pri 32%
Sec to Pri Pri to Sec

NOTE When "T" is shown, it means that there is an alarm for system over-heating, but the normal data transmission will not be affected; if the ambient temperature has been improved, it will return to normal.

5

Precautions Before Application

- We suggest you using 2 brand new 3.5-inch SATA hard drives with the same brand and model number for the best performance. When any one of the hard drives is failed, please ensure that the capacity of the new hard drive is the same or bigger than the original one.
- Please ensure that the hard drives are free of bad tracks before using, otherwise, it may cause system crash in turn resulting in data loss.
- We strongly suggest you that the RAID mode should be decided before starting use SR2611+. If you need to reset the RAID mode after using SR2611+, please remember to backup your data on the other hard drives or the data may lose.
- We strongly recommend you to keep an extra copy at your important personal data other than stored in your SR2611+ product. Raidon will not be responsible of your data loss problem.

Thank you for choosing product from RAIDON Technology Inc. This information in the manual has been thoroughly checked before publication, but may not conform to the product actually delivered which mean actual product specifications depend on the product shipped to you. Any update in the specifications or product-related information shall not be subject to further notice but for the latest information on the product, please visit the website as www.RAIDON.com.tw or contact us at supporting@raidon.com.tw, and we will get back to you as soon as possible.

Copyright © RAIDON TECHNOLOGY, INC. All rights reserved.

6